



**COLDWELL  
BANKER  
COMMERCIAL**

LYLE & ASSOCIATES, LP

## HERITAGE COURT SHOPPING CENTER

\$2.25 PSF/MO (NNN)

AVAILABLE SPACE

1,758 SF



FOR LEASE

CBCWORLDWIDE.COM

### CONTACT

Curtis Barlow  
760 899 7700  
cbarlow@cbclyle.net  
CaIDRE #01380247

©2023 Coldwell Banker. All Rights Reserved. Coldwell Banker Commercial® and the Coldwell Banker Commercial logos are trademarks of Coldwell Banker Real Estate LLC. The Coldwell Banker® System is comprised of company owned offices which are owned by a subsidiary of Anywhere Advisors LLC and franchised offices which are independently owned and operated. The Coldwell Banker System fully supports the principles of the Equal Opportunity Act.

**COLDWELL BANKER COMMERCIAL**  
LYLE & ASSOCIATES, LP  
78000 Fred Waring Drive, Suite 200, Palm Desert, CA 92211  
760.772.6400



# HERITAGE COURT SHOPPING CENTER

44-100 Jefferson Street, Indio, CA 92201

LEASE



## OFFERING SUMMARY

Available SF:	1,758 SF
Lease Rate:	\$2.25 PSF/month (NNN)
Lot Size:	11.29 Acres
Year Built:	2005
Building Size:	108,319 SF
Renovated:	2018
Zoning:	NC Neighborhood Commercial
Market:	Inland Empire
Submarket:	Coachella Valley

## PROPERTY OVERVIEW

Term: 5 years minimum. Tenant improvement Allowance Negotiable. Options negotiable.

## PROPERTY HIGHLIGHTS

- Walmart Neighborhood Market and Walgreens are anchors.
- Competitive rental rates.
- Don't delay - only 1 suite available!

[CBCWORLDWIDE.COM](http://CBCWORLDWIDE.COM)

Curtis Barlow  
760 899 7700  
cbarlow@cbclyle.net  
CalDRE #01380247



LYLE & ASSOCIATES, LP



# HERITAGE COURT SHOPPING CENTER

44-100 Jefferson Street, Indio, CA 92201

LEASE



CBCWORLDWIDE.COM

Curtis Barlow  
760 899 7700  
cbarlow@cbclyle.net  
CalDRE #01380247

 **COLDWELL  
BANKER  
COMMERCIAL**  
LYLE & ASSOCIATES, LP



## HERITAGE COURT SHOPPING CENTER

44-100 Jefferson Street, Indio, CA 92201



### PROPERTY HIGHLIGHTS - SUITE D403

D403. Located adjacent to Monsoon Indian Cuisine, this 1,758 s.f. suite was formerly occupied by a postal/packing/shipping store. It features an open ceiling, concrete floor, one restroom, a small office, and is sprinklered. It has 200 amp electrical service, water and sewer. A 5-ton HVAC unit serves the suite.



[CBCWORLDWIDE.COM](http://CBCWORLDWIDE.COM)

Curtis Barlow  
760 899 7700  
cbarlow@cbclyle.net  
CalDRE #01380247

 **COLDWELL  
BANKER  
COMMERCIAL**  
LYLE & ASSOCIATES, LP

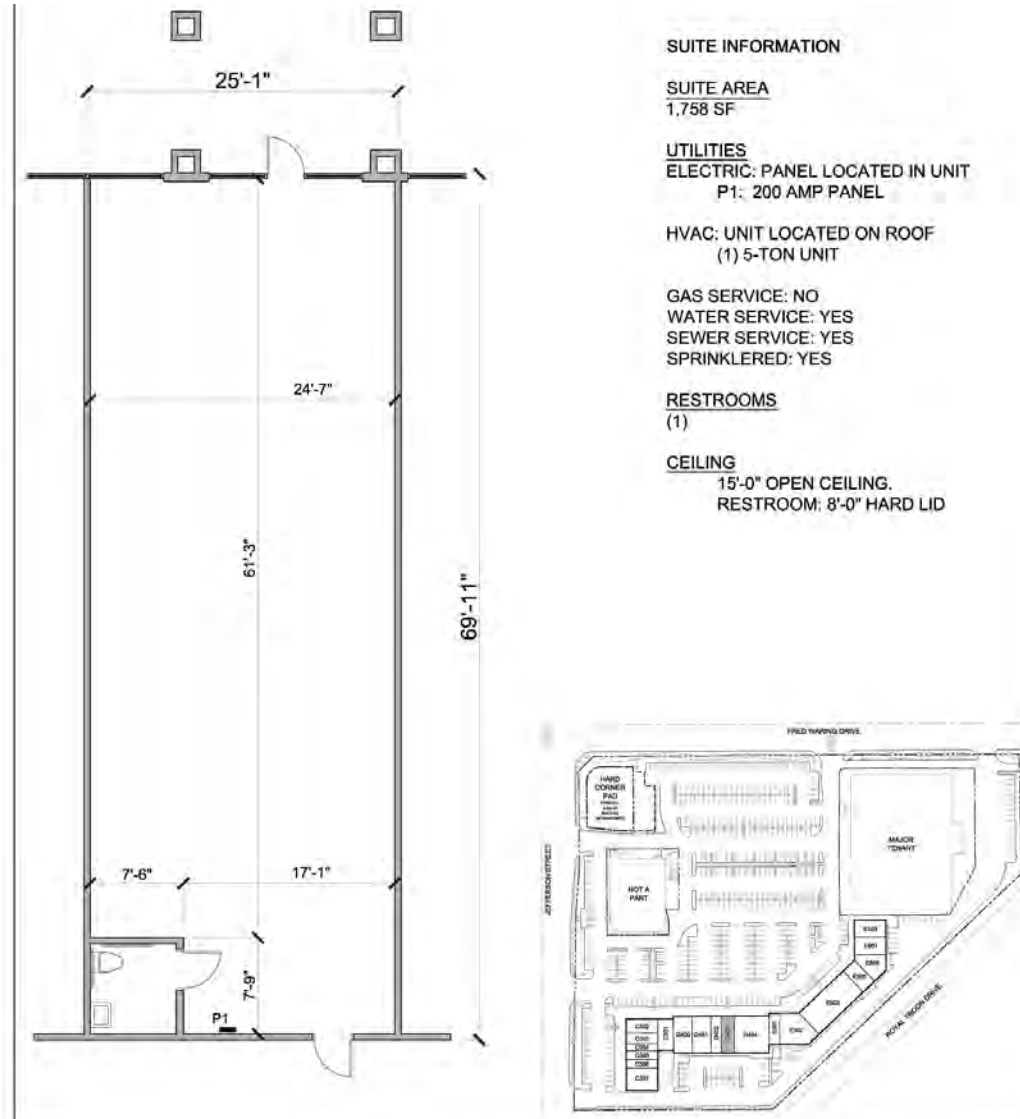
LEASE



# HERITAGE COURT SHOPPING CENTER

44-100 Jefferson Street, Indio, CA 92201

LEASE



CBCWORLDWIDE.COM

Curtis Barlow  
760 899 7700  
cbarlow@cbclyle.net  
CalDRE #01380247

 **COLDWELL  
BANKER  
COMMERCIAL**  
LYLE & ASSOCIATES, LP



# HERITAGE COURT SHOPPING CENTER

44-100 Jefferson Street, Indio, CA 92201

LEASE



[CBCWORLDWIDE.COM](http://CBCWORLDWIDE.COM)

Curtis Barlow  
760 899 7700  
cbarlow@cbclyle.net  
CalDRE #01380247



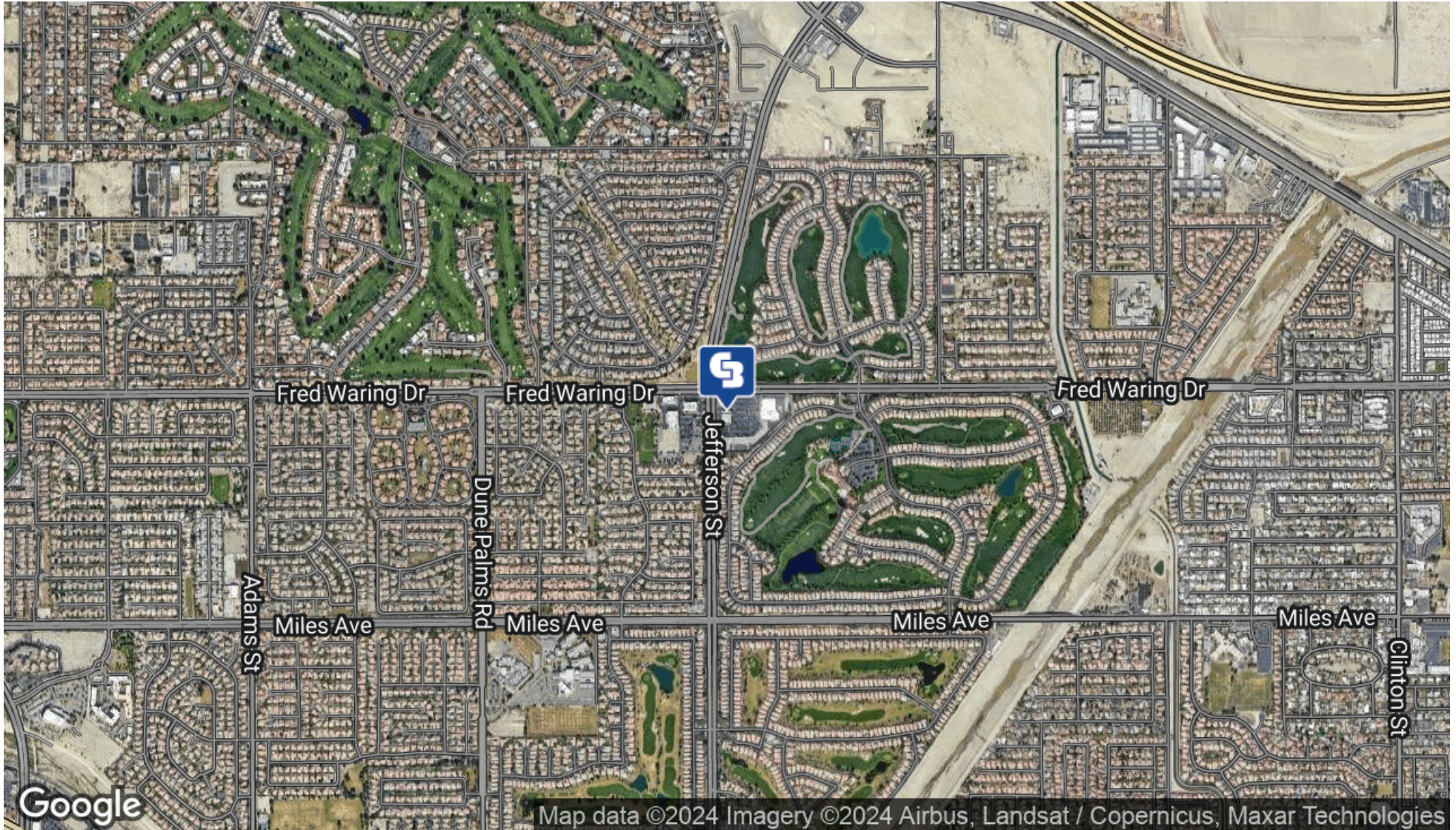
LYLE & ASSOCIATES, LP



# HERITAGE COURT SHOPPING CENTER

44-100 Jefferson Street, Indio, CA 92201

LEASE



CBCWORLDWIDE.COM

Curtis Barlow  
760 899 7700  
cbarlow@cbclyle.net  
CalDRE #01380247



LYLE & ASSOCIATES, LP



# HERITAGE COURT SHOPPING CENTER

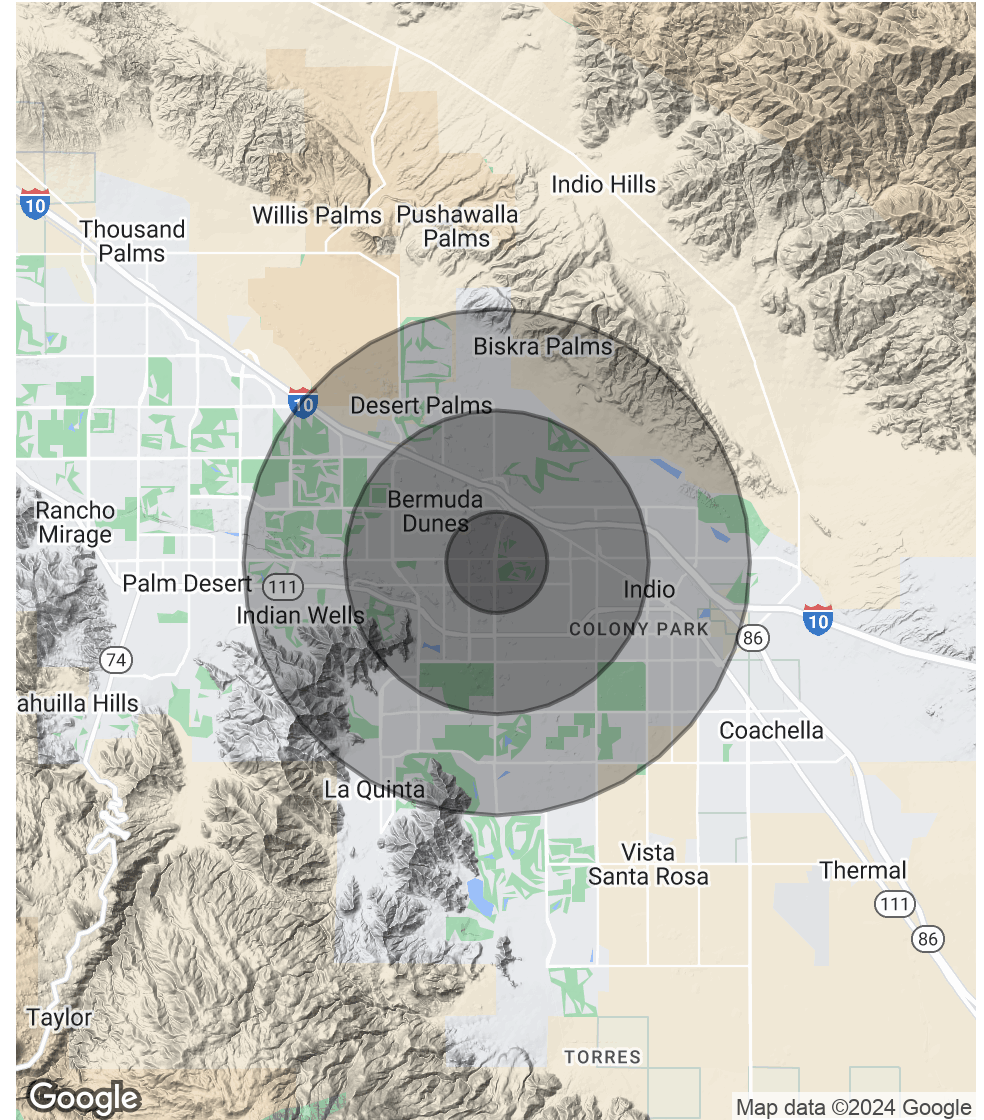
44-100 Jefferson Street, Indio, CA 92201

POPULATION	1 MILE	3 MILES	5 MILES
Total Population	9,182	78,574	147,973
Average age	44.5	36.4	37.8
Average age (Male)	40.8	35.5	37.2
Average age (Female)	45.8	36.9	38.1

HOUSEHOLDS & INCOME	1 MILE	3 MILES	5 MILES
Total households	3,460	27,565	52,749
# of persons per HH	2.7	2.9	2.8
Average HH income	\$96,040	\$78,165	\$80,102
Average house value	\$482,215	\$409,904	\$401,949

\* Demographic data derived from 2020 ACS - US Census



LEASE

CBCWORLDWIDE.COM

Curtis Barlow  
760 899 7700  
cbarlow@cbclyle.net  
CalDRE #01380247



LYLE & ASSOCIATES, LP